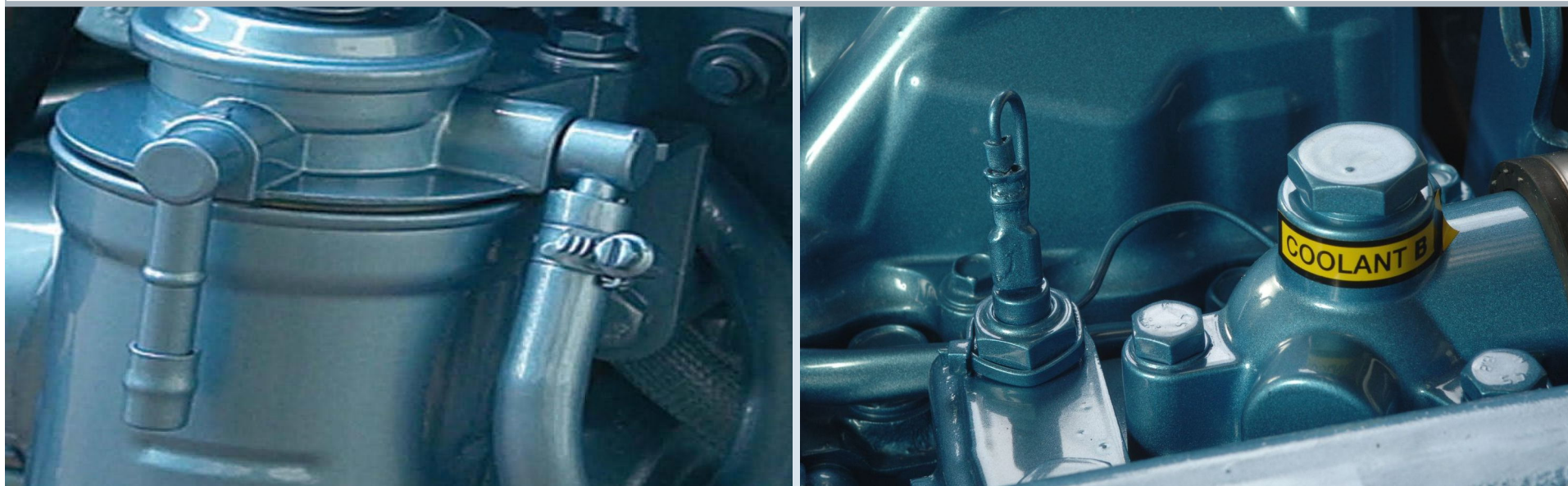


COELMO'S GEN SETS DM series



COMPARISON DM 350 GENSET WITH COMPETITION (Power, main sizes and weight)

Power kW	Builder	Model	engine base	main sizes mm			Weight Kg
				Length	Width	Height	
3,5	COELMO marine	DM 350	Faryman 18 W	615	445	525	105
3,8	Fischer Panda	PMS 4500 SCB	Faryman 18 W	520	370	520	117
3,0	MASE	IS 3,5	Yanmar 1 cylinder	590	406	515	96
3,5	VOLPI	Paguro 4000	Faryman 18 W	550	320	520	83

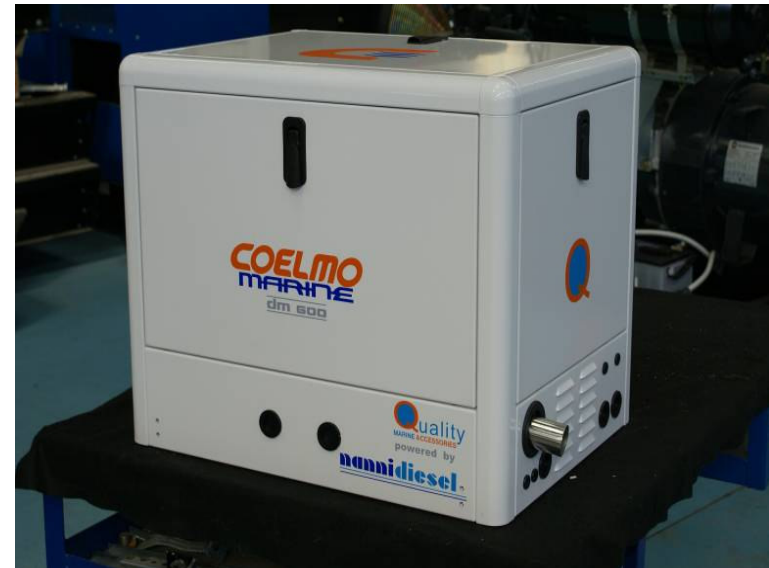
COMPARISON DM 600 GENSET WITH COMPETITION (Power, main sizes and weight)

Power kW	Builder	Model	engine base	main sizes mm			Weight Kg
				Length	Width	Height	
6,0	COELMO marine	DM 600	NANNI N2.10 (Kubota Z 482)	630	465	525	128
5,1	Fischer Panda	PMS 6000 ND	Kubota Z 482	595	440	600	164
5,7	MASE	GS 061	Kubota Z 482	650	468	555	165
5,0	Mastervolt	Whisper 6	Mitsubishi L2E	660	495	550	178
5,0	VOLPI	Paguro 6000	Lombardini LDW 502	660	460	620	130

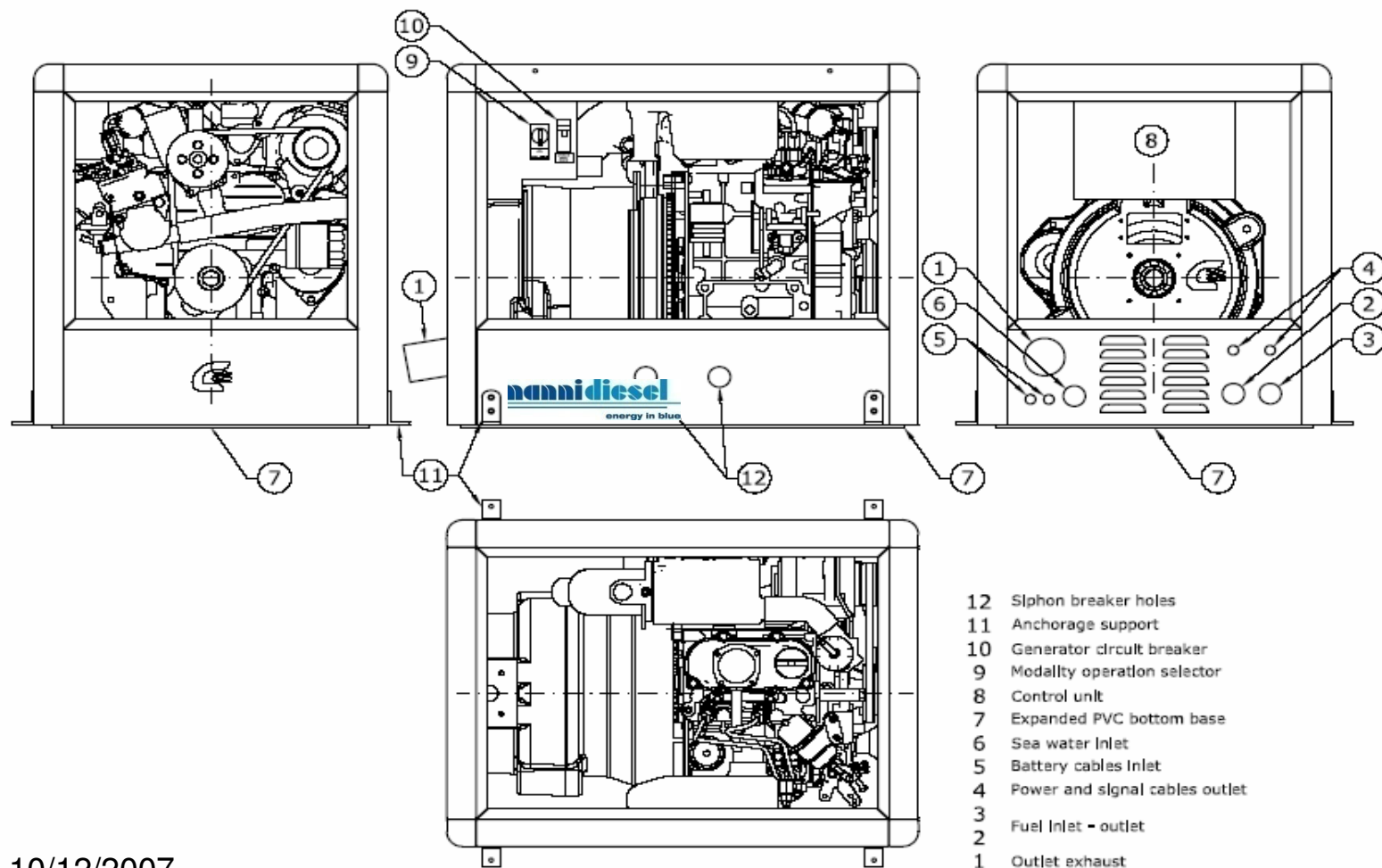
DM600

Main features

- Aluminium sound proof canopy with polyester marine paint
- Sound proof material with PVC plate
- Large access possibility on the 5 sides
- Water cooling system:
 - engine cooled by heat exchanger sea water / fresh water
 - alternator cooled by sea water
- Hydraulic and electric connections located on the same side
- Electronic remote control and protection system
- Easy installation on board
- Reduced dimensions
- Low noise level
- Large accessories range



DM600



10/12/2007

DM600

- Holes for Siphon breaker piping on both sides



DM600

Hydraulic links

- Fuel inlet & outlet
- Sea water inlet
- Exhaust outlet

Electric links

- Battery cables inlet
- Power cable outlet
- Signal cable

All on the same side



DM600

- Large access trough every 5 sides to allow the Genset checking and maintenance
- Possibility to dismantle the canopy in every part to extract the Genset and to put it in open version in the case of extraordinary maintenance



DM600

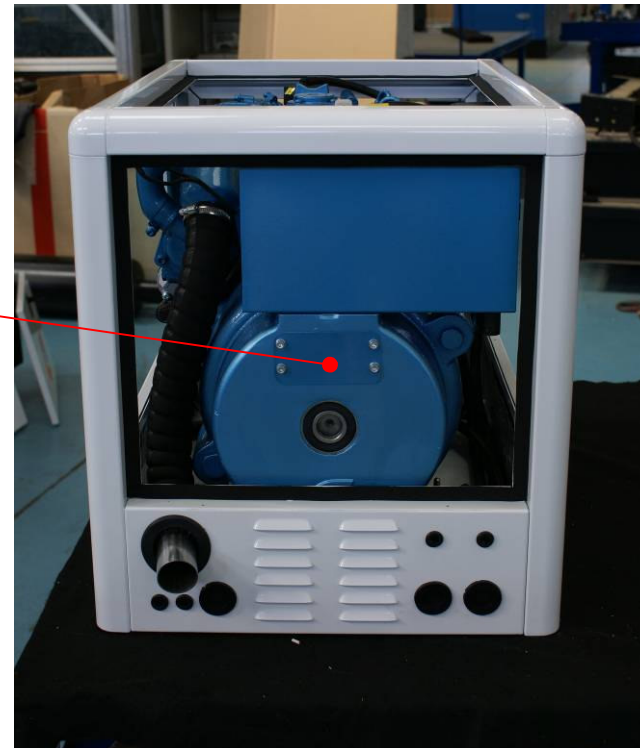
Complete local control board with:

- Genset circuit breaker
- Local/remote selector



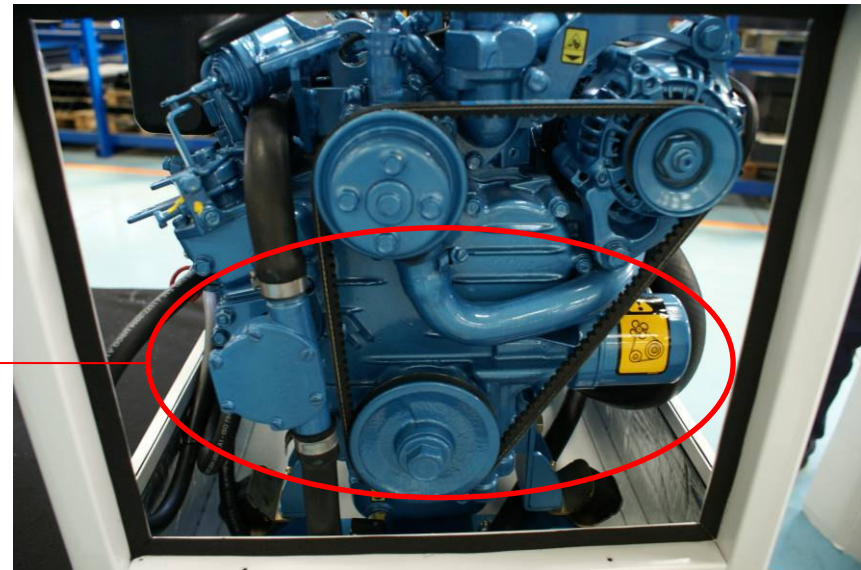
DM600

- Possibility of fast replacing of diodes trough this door



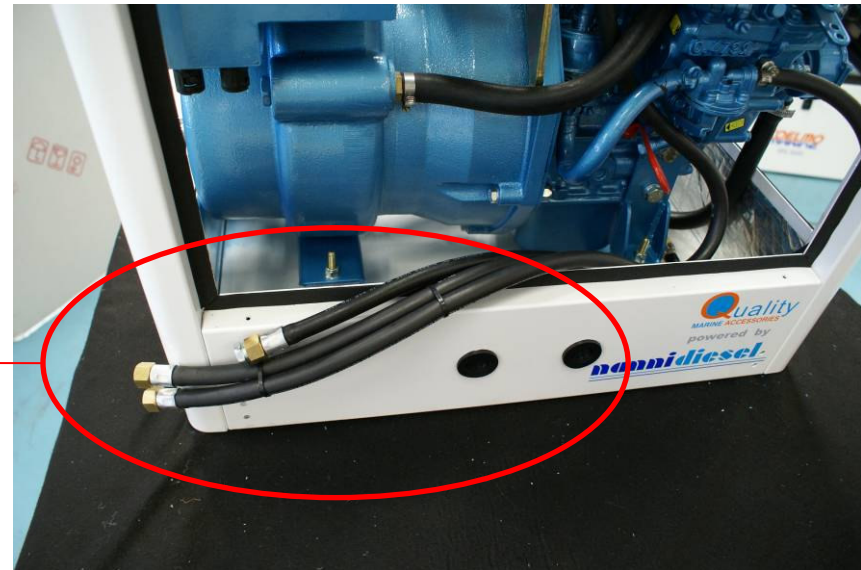
DM600

- Ordinary maintenance concentrated on the front side :
 - > sea water pump,
 - > oil filter
 - > alternator belt



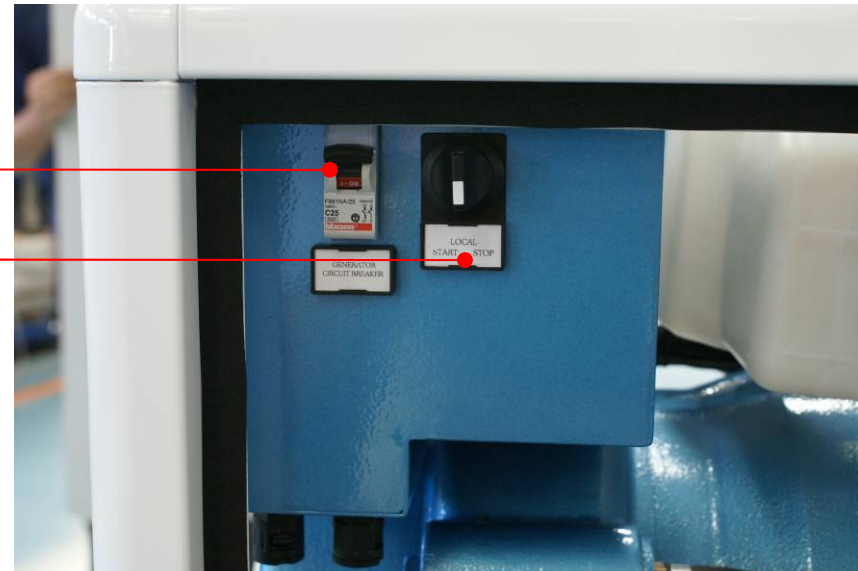
DM600

- Fuel feeding and return and sea water inlet piping for a fast and easy installation



DM600

- Genset circuit breaker
- Local/remote selector

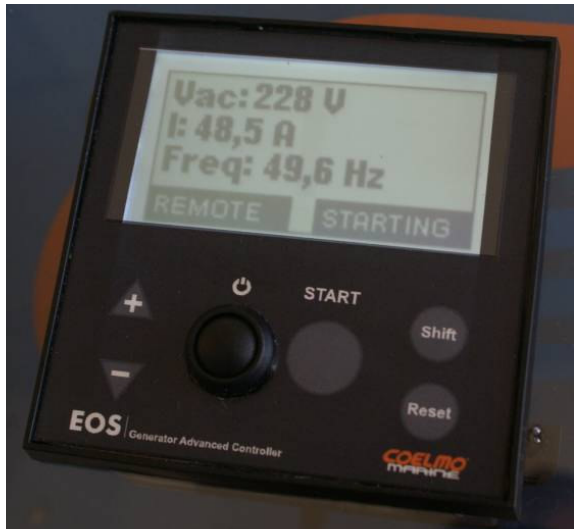


EOS GENERATOR ADVANCED CONTROLLER

- Backlight display 128x64 pixels
- Control panel 96 x 96 mm to install on board with possibility to interface it with pre-existing systems (SCADA or similar)



EOS GENERATOR ADVANCED CONTROLLER

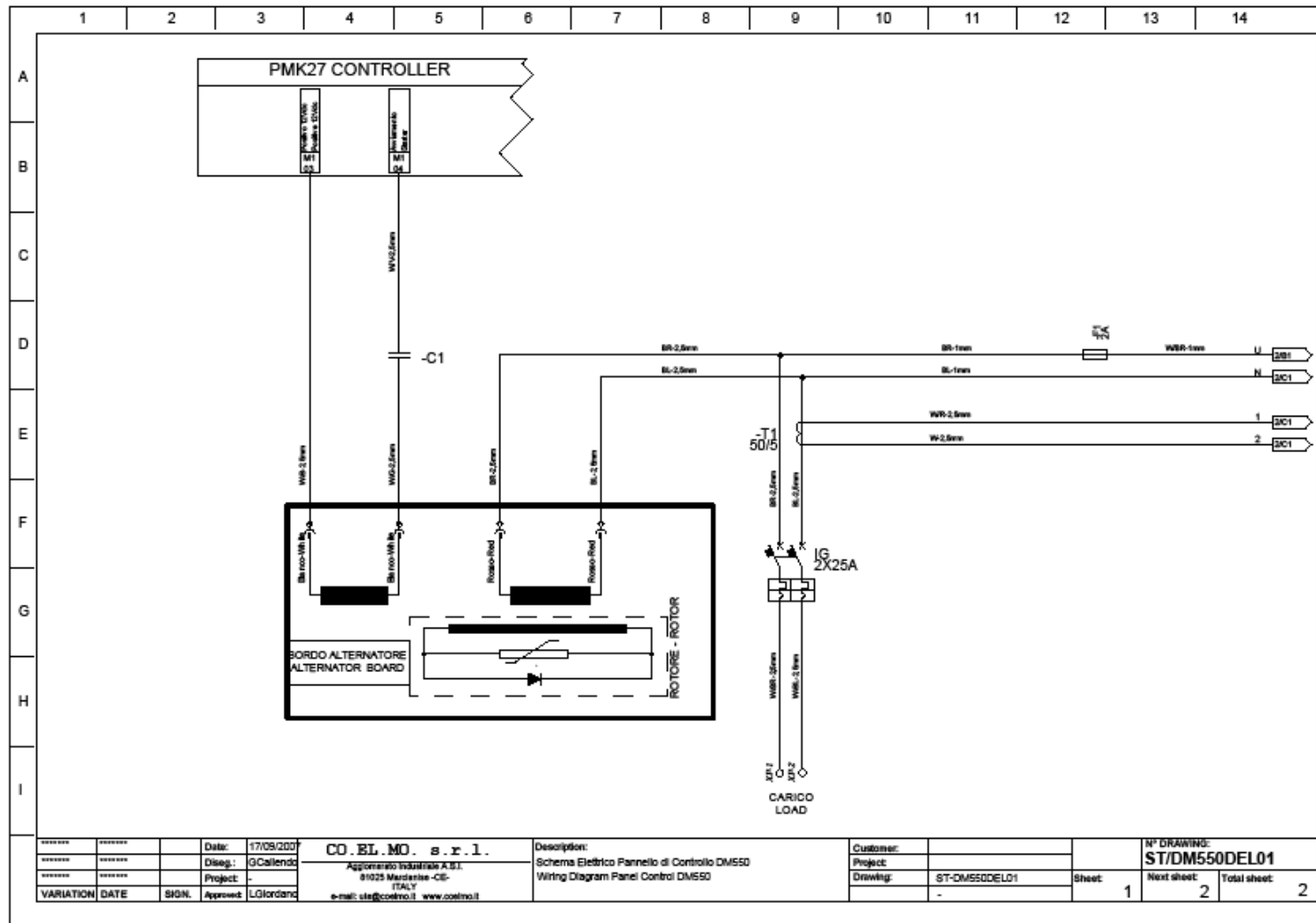


- The display allows to visualize alarm messages as reported in the table. Each of these alarms will be visualized and could be set to provide only signal, engine stop, or start siren relay. Other than the alarms are checkable also the principal measures.

ALARMS	MEASURES
Low oil pressure	Amp,
High water temperature	Volt
High exhaust temperature	Hz
Alternator battery charger failure	Vcc
Fault start	Time counter
Mechanical failure	Maintenance remaining hours
High frequency generator	Water temperature (optional)
Maintenance deadline	Oil pressure (optional)
Generator overload	
Low battery voltage	
Low alternator voltage	
High alternator voltage	
Low frequency generator	

DM600 WIRING DIAGRAM

Wiring diagram 1

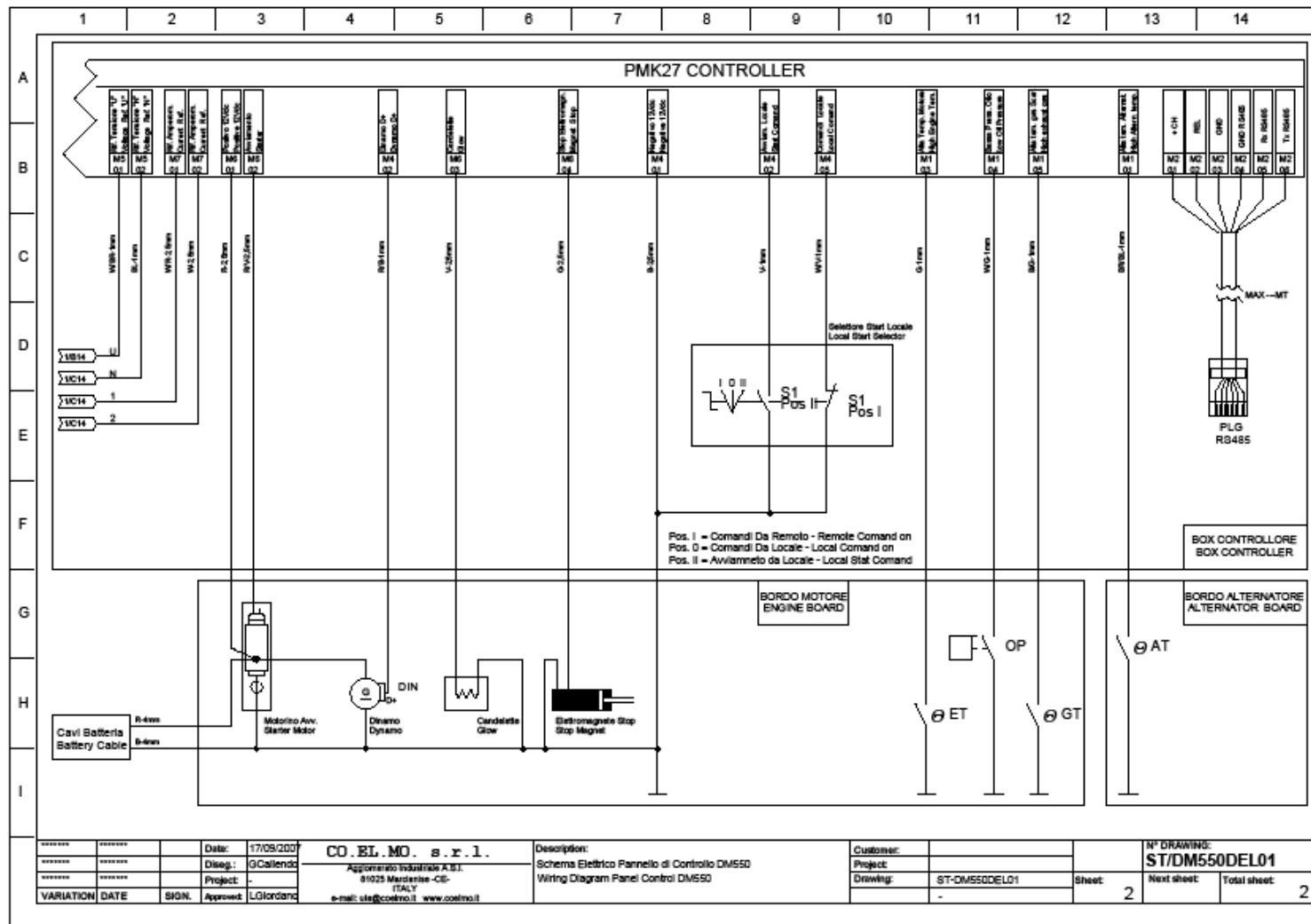


10/12/2007

16

DM600 WIRING DIAGRAM

Wiring diagram 2



10/12/2007

17

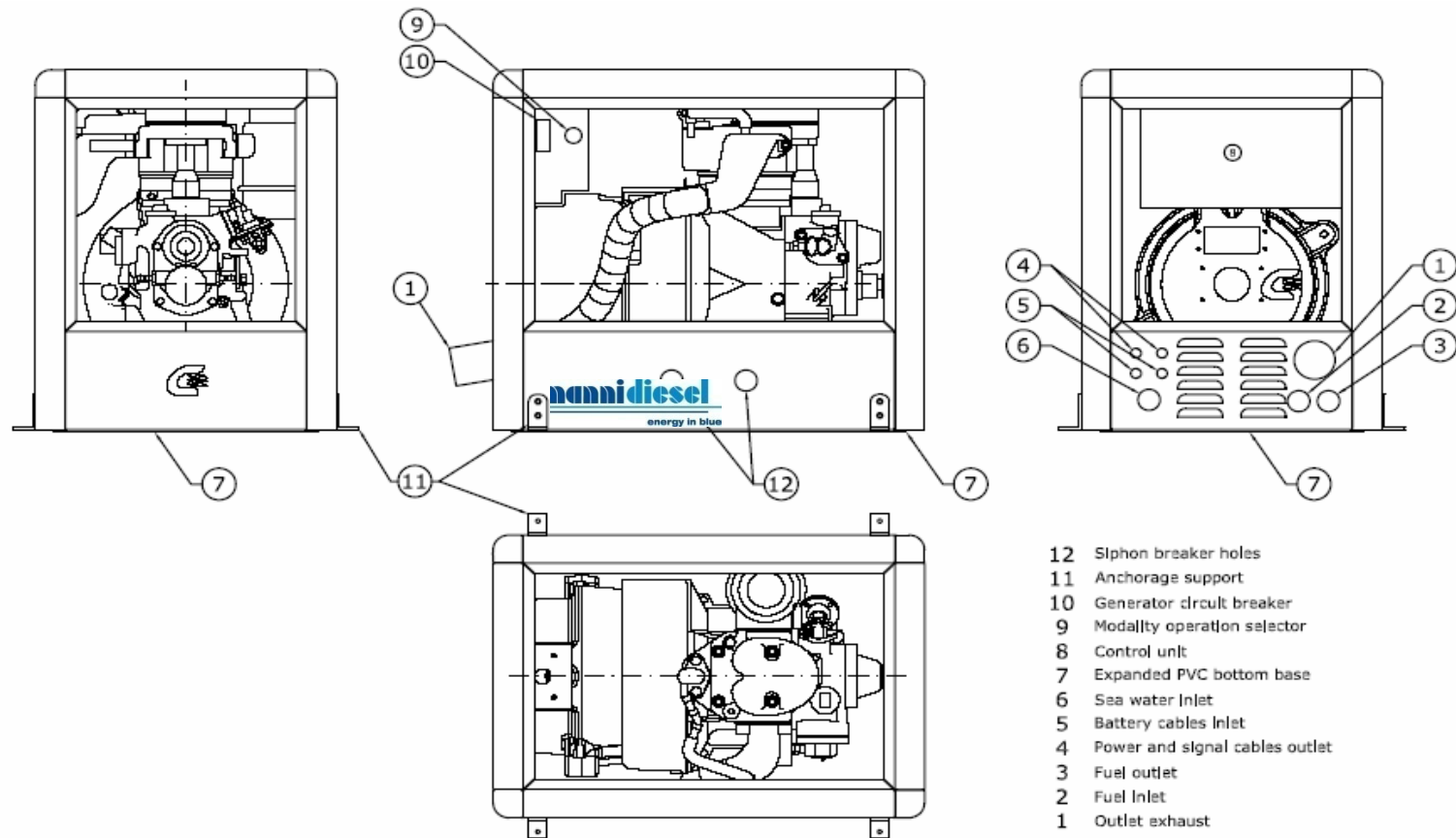
DM350

Main features

- Aluminium sound proof canopy with polyester marine paint
- Sound proof material with PVC plate
- Large access possibility on the 5 sides
- Water cooling system:
 - > engine cooled by heat exchanger sea water / fresh water
 - > alternator cooled by sea water
- Hydraulic and electric connections located on the same side
- Electronic remote control and protection system
- Easy installation on board
- Reduced dimensions
- Low noise level
- Large accessories range



DM350



- 12 Siphon breaker holes
- 11 Anchorage support
- 10 Generator circuit breaker
- 9 Modality operation selector
- 8 Control unit
- 7 Expanded PVC bottom base
- 6 Sea water Inlet
- 5 Battery cables Inlet
- 4 Power and signal cables outlet
- 3 Fuel outlet
- 2 Fuel Inlet
- 1 Outlet exhaust

nannidiesel
energy in blue

DM350

Hydraulic links

- Fuel inlet & outlet
- Sea water inlet
- Exhaust outlet

Electric links

- Battery cables inlet
- Power cable outlet
- Signal cable

All on the same side



DM350

- Large access trough every 5 sides to allow the Genset checking and maintenance
- Possibility to dismantle the canopy in every part to extract the Gen set and to put it in open version in the case of extraordinary maintenance



DM350

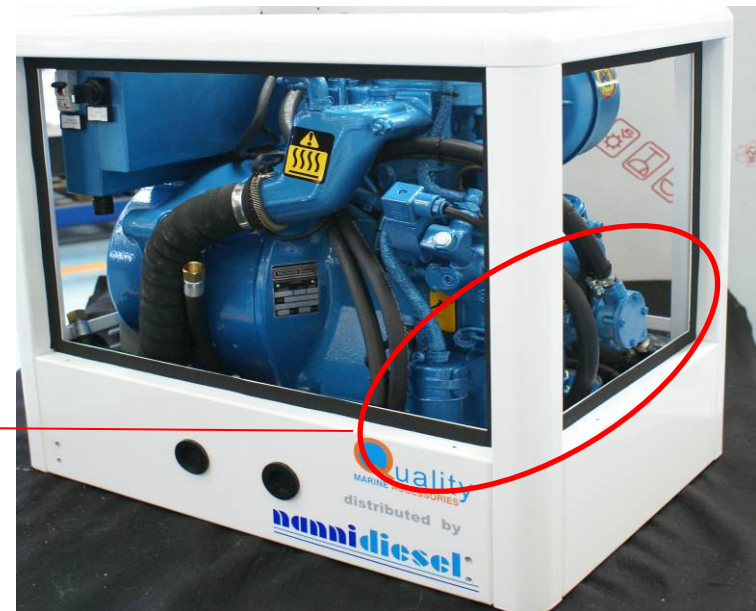
Complete local control board with:

- Genset circuit breaker
- Local/remote selector
- High exhaust temperature switch



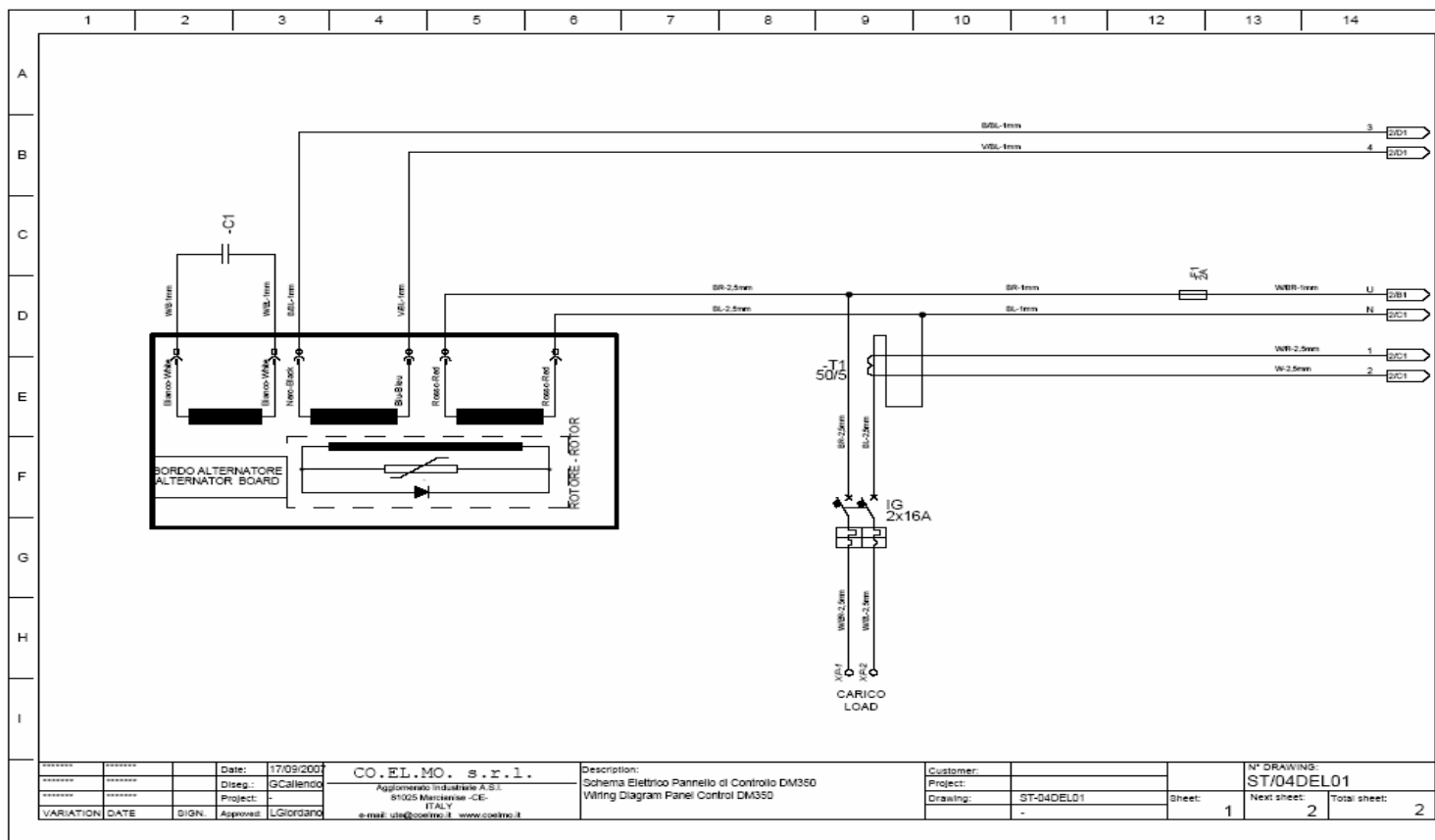
DM350

- The DM350 cooling system works using exclusively sea water as cold fluid.
- This system has allowed to reduce the overall dimensions and the weight, in addition to the noise level reduction.
- Ordinary maintenance concentrated on the front side:
 - sea water pump
 - fuel filter



DM350

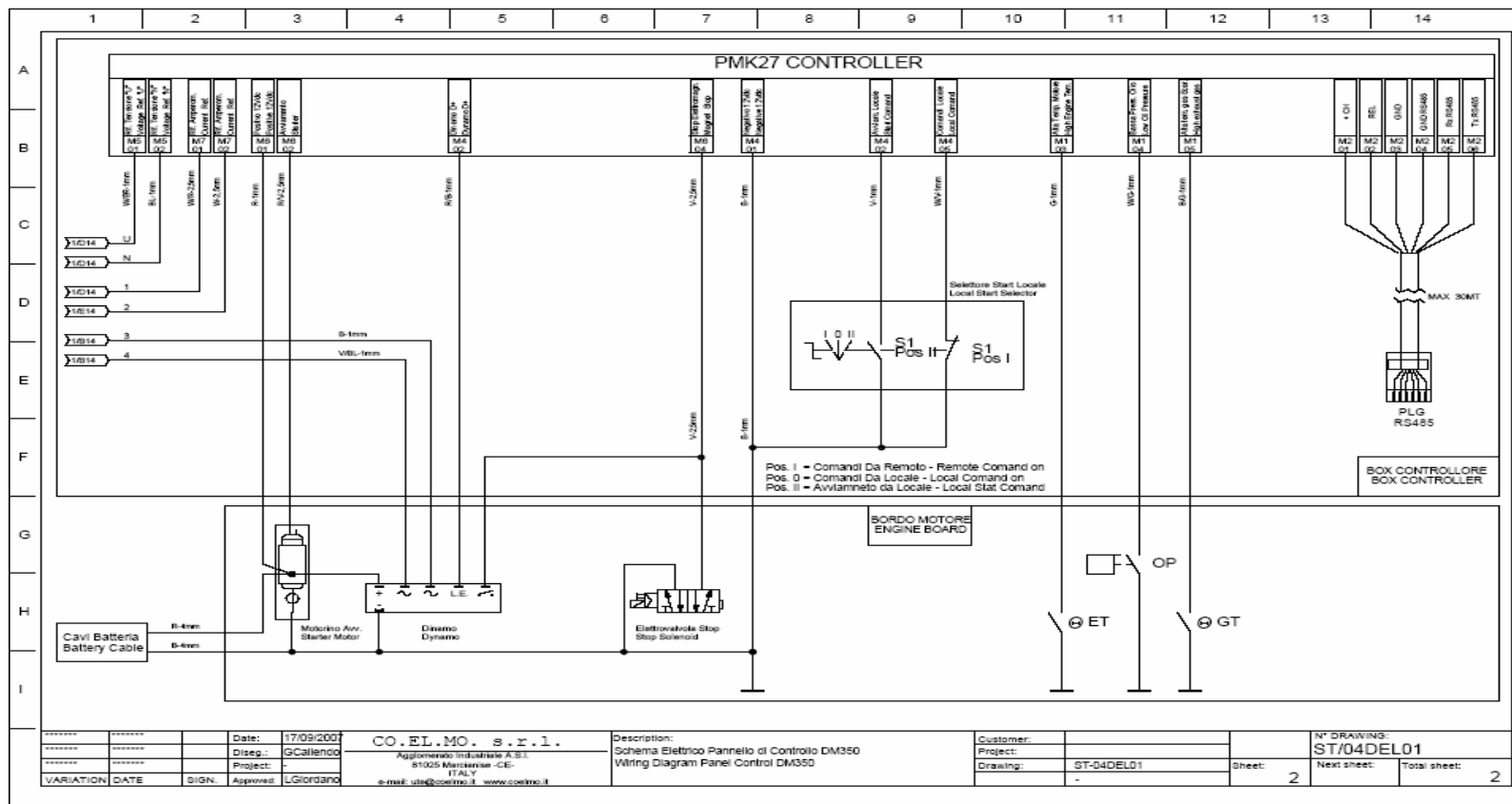
Wiring diagram 1



10/12/2007

DM350

Wiring diagram 2



10/12/2007

25